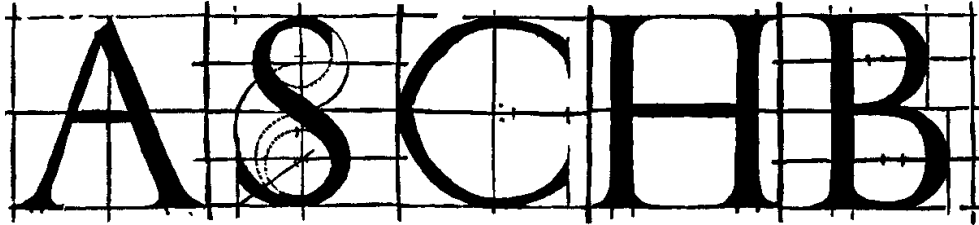


ASSOCIATION FOR STUDIES IN THE CONSERVATION OF HISTORIC BUILDINGS



**ANNUAL GENERAL MEETING AND CONFERENCE  
MONDAY 19 MARCH 2012**

at

**London Canal Museum New Wharf Road off Wharfedale Road York Way  
Kings Cross**

***About the Conference***

***TRANSPORT'S LEGACY TO THE BUILT ENVIRONMENT***

Nowhere in London is as dominated by historic transport infrastructure as Kings Cross and St. Pancras – the two main line termini, four underground lines the Thameslink route, canal and numerous roads and streets. Mid-Victorian engineering and investment decisions have shaped the whole area and influence the lives of millions every day. As rail freight and canal traffic has declined part of that historic infrastructure has disappeared. By contrast the immense increase in passenger traffic has put the whole area under renewed pressure. That so much of the historic infrastructure is still in successful use shows how adaptable it can be but what of its future and what role can conservation play?

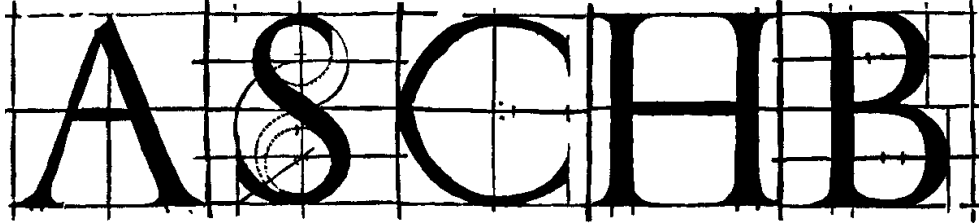
With specific reference to the development of Kings Cross, the conference will look at the historic impact of transport on the built environment and the particularities of its conservation. How does a piece of infrastructure differ from an individual building? What historic building types have arisen from the development of transport? What aspects of our transport legacy are most under threat now? What approach should be taken to a historic construction whose significance resided in a long gone system of which it was a part? How do we reconcile the conservation of historic technologies with the demands for twenty first century transport? How in philosophy and practice do other conservation disciplines engaged with the transport heritage differ from building conservation? These are just some of the questions that we might address...

The fee for the Conference, to include a buffet lunch and all refreshments, is £85 for ASCHB members, £120 for non-members and £40.00 for students. There are 10 student places available on a first come first served basis with valid student identification. To attend, please complete and return the enclosed booking form plus payment as directed on the form **before March 1st**. Numbers are limited, so places will be on a first come: first served basis. If necessary priority will be given to ASCHB members.

Information and booking form: <http://www.aschb.org.uk/conferences.asp> or [meetings@aschb.org.uk](mailto:meetings@aschb.org.uk)

Booking enquiries: Email: [Karen.Butti@thomasford.co.uk](mailto:Karen.Butti@thomasford.co.uk) T. 020 8659 3250

How to find the venue: <http://www.canalmuseum.org.uk/visit/printmap.htm>



**PROGRAMME**

09.00 Registration for AGM only  
 09.15 – 10.00 **ASCHB AGM**  
 Chairman: Richard Harris, President of ASCHB

**10.15 – 17.30 CONFERENCE.** Chairmen: Steven Brindle and Alan Baxter

**TRANSPORT’S LEGACY TO THE BUILT ENVIRONMENT**

9.45 – 10.15 Registration for Conference - Tea/coffee served from 9.45 am.  
 Members not attending AGM and delegates may enjoy the museum.

**Morning Session**

10.15	Introduction by Chairman (Steven Brindle)
10.25	Keynote (Alan Baxter)
11.00	Planning History in the Kings Cross Area (Alec Forshaw)
11.35	Coffee
11.50	Overview, the conservation plan and recent history (Robert Thorne)
12.25	Kings Cross Development from a developer’s view (Robert Evans of Argent)

**13.00 Buffet Lunch + opportunity to explore the Museum**

**14.00 Tours of Kings Cross, Granary Site, Regents Quarter & Canals**

**Afternoon Session**

15.00	Introduction by Chairman (Alan Baxter)
15.10	The Railway’s Built Heritage Assets (Andy Savage)
15.35	British Waterways (Nigel Crowe)
16.00	Tea
16.30	Plenary & Chairman’s summing up.
17.30	Close

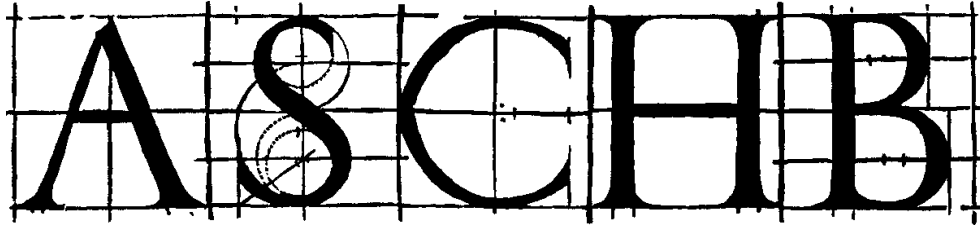
**SPEAKER BIOGRAPHIES**

**Steven Brindle**

Dr Steven Brindle is an English Heritage historian and author of best-selling books on Brunel and on Paddington Station. He has written numerous guidebooks for English Heritage, including the recently published 'Whitby Abbey'.

**Alan Baxter**

Alan Baxter is an engineer whose wide interests include transport systems and a holistic understanding of our built environment. He founded Alan Baxter & Associates in 1974, a firm now 130 strong. Keenly involved in urban design and masterplanning projects, he is also Consulting Engineer to St Paul’s Cathedral. His firm are engineers of new buildings of architectural significance as well as for the sensitive repair and adaptation of notable historic buildings including Hampton Court and the Palace of Westminster. They have written conservation plans for Salisbury Cathedral, the Victoria and



Albert Museum and Tyntesfield House. He serves on the London Advisory Committee of English Heritage and on their national Urban Panel. He was a member of the Heritage Lottery Fund's Expert Panel and has been an assessor on several high-profile design competitions.

### **Alec Forshaw**

Alec Forshaw has had a long involvement with King's Cross, having worked in the planning department of the London Borough of Islington from 1975 to 2007, the last twenty of those years as head of conservation and design. His particular passions are the imaginative reuse of historic buildings and the integration of good modern design into the existing urban context. He now spends his time writing and lecturing, and is a trustee of the Churches Conservation Trust, the Industrial Buildings Preservation Trust and the Islington Buildings Preservation Trust.

### **Robert Thorne**

Robert Thorne is a Director at Alan Baxter & Associates and has been involved in the Kings Cross – St Pancras area since the late 1980s, when he organised the first comprehensive survey of buildings in the Kings Cross Goods Yard. He is the editor (with Michael Hunter) of *Change at Kings Cross* (Historical Publications, 1990). At Alan Baxter's he helped compile the Conservation Plan, which formed the basis of the restoration of the Midland Grand Hotel. The third edition of Jack Simmons and Robert Thorne, *St Pancras Station*, bringing the story up to date, will appear in Spring 2012.

### **Robert Evans**

Robert Evans is an Executive Director of Argent Group plc. He joined Argent in 2001 after 9 years in planning and environmental consultancy. For the last 10 years, he has led the planning work and related commercial negotiations on the redevelopment and regeneration at King's Cross Central, London. Robert was appointed to the Argent Group Board in 2004.

### **Andy Savage**

As Executive Director of the Railway Heritage Trust, Andy Savage administers annual grants of £2 million supporting the national railway's built heritage. He has held this post since retiring as Deputy Chief Inspector of Rail Accident Investigation two years ago. A Chartered Civil Engineer, he spent his entire career in the national rail industry and has a long association with the heritage rail sector. He has spent 38 years as a director of various companies in the Ffestiniog Railway group. In addition, he is the chairman of the Avenue House Estate Trust, which leases and maintains six listed buildings and 10 acres of Victorian gardens in Finchley.

### **Nigel Crowe**

Nigel Crowe is head of heritage for British Waterways (shortly to become the Canal & River Trust), the body responsible for 2,200 miles of inland waterways in England, Scotland and Wales. His role is to lead BW's team of regional heritage advisers in England and Wales. He has over 25 years' experience of working in the conservation, archaeology and interpretation of historic buildings and places. He has written numerous articles concerning heritage conservation and is the author of the *English Heritage Book of Canals*.